

**FOR IMMEDIATE RELEASE**

**MEDIA CONTACT:**

KELLY RADOMSKA, VP OF EXTERNAL AFFAIRS

KRADOMSKA@BOWERS.ORG OR 714.567.3628

**BOWERS  
MUSEUM**

## Celebrating *Wicked* and More at Bowers Museum



Susan Hilferty, American, Emerald City Costume Designed for *Wicked* (2003)

**Santa Ana, CA - January 15, 2025** – Since its opening on October 26, the Bowers Museum’s exhibition *Fantasy: Realms of Imagination* has invited visitors to journey through impossible worlds of creativity. Featuring 160 extraordinary artifacts and multimedia, this exhibition offers a deep dive into the artistry and history of one of the most enduring genres of storytelling.

Now, with only one month remaining for the exhibition and with the global excitement surrounding the current blockbuster *Wicked* movie, the museum highlights its enchanting collection of Oz-related artifacts, including:

- **Emerald City Costume Designed for *Wicked* (2003):** Created by award-winning designer Susan Hilferty, this flamboyant Edwardian-inspired costume captures the magic of Oz as reimagined for the stage. Worn in the London production of the Tony-award winning musical *Wicked* (2003), it reflects the storied friendship between Elphaba and Glinda while paying homage to the original publication date of L. Frank Baum’s classic.
- **Single-Sheet Poster for the 1955 Re-Release of *The Wizard of Oz* (1939):** A rare artifact showcasing the legacy of the iconic MGM film, renowned for its groundbreaking Technicolor visuals.

2002 North Main Street, Santa Ana, California 92706  
bowers.org | Tel 714.567.3600 | Fax 714.567.3603

- **Excerpt from *The Wonderful Wizard of Oz* (1910):** A 2:54-minute clip from the first cinematic adaptation, directed by Otis Turner.
- **L. Frank Baum's *The New Wizard of Oz* (1906):** This edition, illustrated by W.W. Denslow, celebrates the cultural phenomenon that began with Baum's groundbreaking fantasy series.

*Fantasy: Realms of Imagination* spans far beyond the Land of Oz. Visitors are invited to explore the fantastical worlds of Studio Ghibli, journey into the depths of *Pan's Labyrinth*, and encounter the oldest forms of literature that continue to inspire fantasy authors today. Presented in partnership with the British Library, *Fantasy: Realms of Imagination* includes rare first editions, costumes, drafts of iconic novels, film props, and immersive displays.

"With *Wicked* captivating audiences worldwide, we're thrilled to showcase the connections between this beloved tale and our exhibition's broader exploration of fantasy," said Kelly Radomske, Vice President of External Affairs at Bowers Museum. "This is an extraordinary opportunity to experience the magic of Oz alongside other fantastical realms."

Plan Your Visit: *Fantasy: Realms of Imagination* exhibition is on view through February 16, 2025. Don't miss this once-in-a-lifetime chance to immerse yourself in the worlds that have shaped the genre of fantasy.

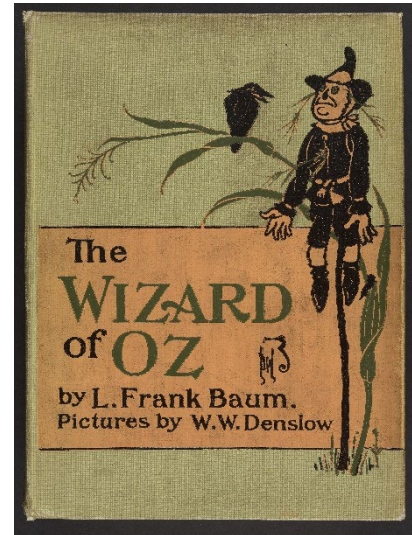
#### Details:

- **Exhibition Dates:** October 26, 2024 – February 16, 2025
- **Location:** Bowers Museum, 2002 North Main Street, Santa Ana, CA 92706
- **Opening Hours:** Tuesday - Sunday, 10 AM - 4 PM

**About Bowers Museum:** Located in Santa Ana, California, Bowers Museum has been enriching lives through the world's finest arts and culture for over 80 years. Voted best museum in Orange County for the past 31 years (2024), Bowers Museum is committed to promoting education and understanding by bringing the world's great cultural art to Southern California.

**About the British Library:** We are the national library of the UK and we are here for everyone. Our shelves hold over 170 million items – a living collection that gets bigger every day. Although our roots extend back centuries, we aim to collect everything published in the UK today, tomorrow and far into the future. Our trusted experts care for this collection and open it up for everyone to spark new discoveries, ideas and to help people do incredible things.

We have millions of books, and much more besides. Our London and Yorkshire sites hold collections ranging from newspapers and maps to sound recordings, patents, academic journals, as well as a copy of every UK domain website and blog. Our public spaces provide a



L. Frank Baum, *The Wizard of Oz*, 1906 © The British Library Board

## BOWERS MUSEUM

2002 North Main Street, Santa Ana, California 92706  
bowers.org | Tel 714.567.3600 | Fax 714.567.3603



place to research, to meet friends, to start up a new business or simply to get inspired by visiting our galleries and events. We work with partners and libraries across the UK and the world to make sure that as many people as possible have the chance to use and explore our collections, events and expertise. And we're always open [online](#), along with more and more of our digitised collection.

An exhibition by



Supported by  
International Touring Partner



**Wayland**  
Games

Additional support provided by



*Fantasy: Realms of Imagination* is a British Library exhibition with contributions from Bowers Museum.

Further support for the exhibition provided by Solani USA Inc. & Palatina Cultural Group S.r.l., The Nicholas Endowment, Janis Agopian, Elizabeth Nitta Maxson, and Dr M. Linda Sutherland.

## BOWERS MUSEUM

2002 North Main Street, Santa Ana, California 92706  
bowers.org | Tel 714.567.3600 | Fax 714.567.3603

